

Anytown Public Schools

13/14 Enrollment Projection



Middle Cities
EDUCATION ASSOCIATION

826 Municipal Way
Lansing, MI 48917
517.492.1380
www.middlecities.org

Anytown Public Schools - 13/14

Table of Contents

Table of County Births	1
Historic and Current Enrollment	2
Method 1 Tables	
Five year Projected Enrollments	3
Past, Present, Future Enrollment Comparison	4
Enrollment Charts	5
Ten year Projected Enrollments	7
Method 2 Tables	
Five year Projected Enrollments	8
Past, Present, Future Enrollment Comparison	9
Enrollment Charts	10
Ten year Projected Enrollments	12
Method 3 Tables	
Five year Projected Enrollments	13
Past, Present, Future Enrollment Comparison	14
Enrollment Charts	15
Ten year Projected Enrollments	17
Accuracy Table	18
Staffing Charts	19
Cross-Method Charts	25

Anytown Public Schools - 13/14

County Births - Genesee County

2003	6,196
2004	6,264
2005	6,210
2006	5,986
2007	6,075
2008	6,033
2009	5,690
2010	5,412
2011	5,248
2012	4,988
2013	5,047

Anytown Public Schools - 13/14

Table 1 - Historic & Current Enrollment

Survival Rate shown in italics

	08/09	09/10	10/11	11/12	12/13	13/14
K	328	364 <i>5.81%</i>	307 <i>4.94%</i>	331 <i>5.53%</i>	327 <i>5.38%</i>	332 <i>5.50%</i>
1	296	282 <i>85.98%</i>	298 <i>81.87%</i>	282 <i>91.86%</i>	274 <i>82.78%</i>	268 <i>81.96%</i>
2	310	311 <i>105.07%</i>	322 <i>114.18%</i>	322 <i>108.05%</i>	280 <i>99.29%</i>	286 <i>104.38%</i>
3	304	305 <i>98.39%</i>	304 <i>97.75%</i>	319 <i>99.07%</i>	326 <i>101.24%</i>	283 <i>101.07%</i>
4	292	300 <i>98.68%</i>	303 <i>99.34%</i>	322 <i>105.92%</i>	331 <i>103.76%</i>	338 <i>103.68%</i>
5	305	299 <i>102.40%</i>	304 <i>101.33%</i>	304 <i>100.33%</i>	319 <i>99.07%</i>	341 <i>103.02%</i>
6	313	318 <i>104.26%</i>	328 <i>109.70%</i>	321 <i>105.59%</i>	322 <i>105.92%</i>	337 <i>105.64%</i>
7	329	314 <i>100.32%</i>	322 <i>101.26%</i>	313 <i>95.43%</i>	330 <i>102.80%</i>	349 <i>108.39%</i>
8	321	341 <i>103.65%</i>	386 <i>122.93%</i>	340 <i>105.59%</i>	315 <i>100.64%</i>	326 <i>98.79%</i>
9	355	370 <i>115.26%</i>	390 <i>114.37%</i>	326 <i>84.46%</i>	382 <i>112.35%</i>	342 <i>108.57%</i>
10	351	344 <i>96.90%</i>	347 <i>93.78%</i>	374 <i>95.90%</i>	341 <i>104.60%</i>	371 <i>97.12%</i>
11	312	345 <i>98.29%</i>	325 <i>94.48%</i>	342 <i>98.56%</i>	353 <i>94.39%</i>	328 <i>96.19%</i>
12	308	264 <i>84.62%</i>	310 <i>89.86%</i>	311 <i>95.69%</i>	309 <i>90.35%</i>	323 <i>91.50%</i>

K-5	1,835	1,861	1,838	1,880	1,857	1,848
6-8	963	973	1,036	974	967	1,012
9-12	1,326	1,323	1,372	1,353	1,385	1,364
K-12	4,124	4,157	4,246	4,207	4,209	4,224

Anytown Public Schools - 13/14

Table 2 - Projected Enrollment Five Years

Method 1

	14/15	15/16	16/17	17/18	18/19
K	309 5.43%	294 5.43%	285 5.43%	271 5.43%	274 5.43%
1	282 84.89%	262 84.89%	250 84.89%	242 84.89%	230 84.89%
2	285 106.20%	299 106.20%	278 106.20%	265 106.20%	257 106.20%
3	285 99.50%	284 99.50%	298 99.50%	277 99.50%	264 99.50%
4	289 102.28%	291 102.28%	290 102.28%	305 102.28%	283 102.28%
5	342 101.23%	293 101.23%	295 101.23%	294 101.23%	309 101.23%
6	362 106.22%	363 106.22%	311 106.22%	313 106.22%	312 106.22%
7	343 101.64%	368 101.64%	369 101.64%	316 101.64%	318 101.64%
8	371 106.32%	365 106.32%	391 106.32%	392 106.32%	336 106.32%
9	349 107.00%	397 107.00%	391 107.00%	418 107.00%	419 107.00%
10	334 97.66%	341 97.66%	388 97.66%	382 97.66%	408 97.66%
11	358 96.38%	322 96.38%	329 96.38%	374 96.38%	368 96.38%
12	297 90.40%	324 90.40%	291 90.40%	297 90.40%	338 90.40%

K-5	1,792	1,723	1,696	1,654	1,617
6-8	1,076	1,096	1,071	1,021	966
9-12	1,338	1,384	1,399	1,471	1,533
K-12	4,206	4,203	4,166	4,146	4,116

Anytown Public Schools - 13/14

Table 3 - Comparison Between Past, Present and Five Year Projected Enrollments - Method 1
 13/14 is the base year. Each year's enrollment is compared to base year. Numbers in *italic* show percent of current enrollment

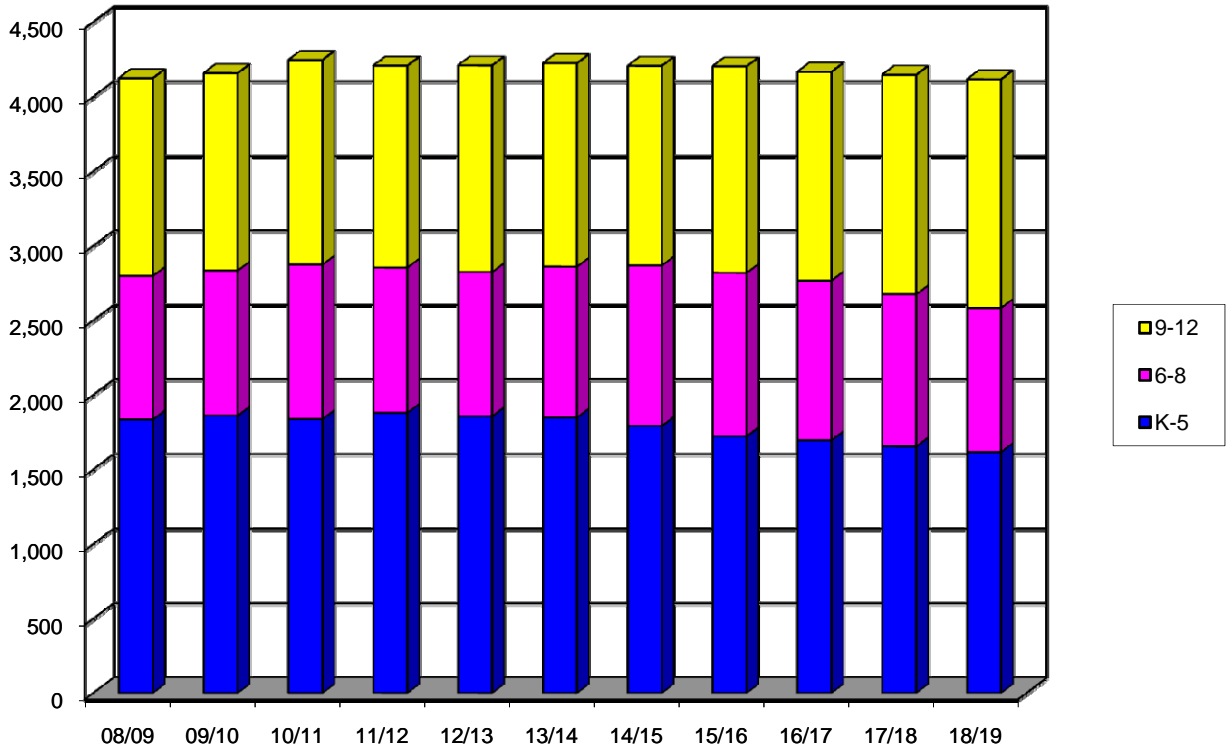
	08/09	09/10	10/11	11/12	12/13	13/14	14/15	15/16	16/17	17/18	18/19
K	328 <i>-1.2%</i>	364 <i>+9.6%</i>	307 <i>-7.5%</i>	331 <i>-0.3%</i>	327 <i>-1.5%</i>	332 <i>+0.0%</i>	309 <i>-6.9%</i>	294 <i>-11.4%</i>	285 <i>-14.2%</i>	271 <i>-18.4%</i>	274 <i>-17.5%</i>
1	296 <i>+10.4%</i>	282 <i>+5.2%</i>	298 <i>+11.2%</i>	282 <i>+5.2%</i>	274 <i>+2.2%</i>	268 <i>+0.0%</i>	282 <i>+5.2%</i>	262 <i>-2.2%</i>	250 <i>-6.7%</i>	242 <i>-9.7%</i>	230 <i>-14.2%</i>
2	310 <i>+8.4%</i>	311 <i>+8.7%</i>	322 <i>+12.6%</i>	322 <i>+12.6%</i>	280 <i>-2.1%</i>	286 <i>+0.0%</i>	285 <i>-0.3%</i>	299 <i>+4.5%</i>	278 <i>-2.8%</i>	265 <i>-7.3%</i>	257 <i>-10.1%</i>
3	304 <i>+7.4%</i>	305 <i>+7.8%</i>	304 <i>+7.4%</i>	319 <i>+12.7%</i>	326 <i>+15.2%</i>	283 <i>+0.0%</i>	285 <i>+0.7%</i>	284 <i>+0.4%</i>	298 <i>+5.3%</i>	277 <i>-2.1%</i>	264 <i>-6.7%</i>
4	292 <i>-13.6%</i>	300 <i>-11.2%</i>	303 <i>-10.4%</i>	322 <i>-4.7%</i>	331 <i>-2.1%</i>	338 <i>+0.0%</i>	289 <i>-14.5%</i>	291 <i>-13.9%</i>	290 <i>-14.2%</i>	305 <i>-9.8%</i>	283 <i>-16.3%</i>
5	305 <i>-10.6%</i>	299 <i>-12.3%</i>	304 <i>-10.9%</i>	304 <i>-10.9%</i>	319 <i>-6.5%</i>	341 <i>+0.0%</i>	342 <i>+0.3%</i>	293 <i>-14.1%</i>	295 <i>-13.5%</i>	294 <i>-13.8%</i>	309 <i>-9.4%</i>
6	313 <i>-7.1%</i>	318 <i>-5.6%</i>	328 <i>-2.7%</i>	321 <i>-4.7%</i>	322 <i>-4.5%</i>	337 <i>+0.0%</i>	362 <i>+7.4%</i>	363 <i>+7.7%</i>	311 <i>-7.7%</i>	313 <i>-7.1%</i>	312 <i>-7.4%</i>
7	329 <i>-5.7%</i>	314 <i>-10.0%</i>	322 <i>-7.7%</i>	313 <i>-10.3%</i>	330 <i>-5.4%</i>	349 <i>+0.0%</i>	343 <i>-1.7%</i>	368 <i>+5.4%</i>	369 <i>+5.7%</i>	316 <i>-9.5%</i>	318 <i>-8.9%</i>
8	321 <i>-1.5%</i>	341 <i>+4.6%</i>	386 <i>+18.4%</i>	340 <i>+4.3%</i>	315 <i>-3.4%</i>	326 <i>+0.0%</i>	371 <i>+13.8%</i>	365 <i>+12.0%</i>	391 <i>+19.9%</i>	392 <i>+20.2%</i>	336 <i>+3.1%</i>
9	355 <i>+3.8%</i>	370 <i>+8.2%</i>	390 <i>+14.0%</i>	326 <i>-4.7%</i>	382 <i>+11.7%</i>	342 <i>+0.0%</i>	349 <i>+2.0%</i>	397 <i>+16.1%</i>	391 <i>+14.3%</i>	418 <i>+22.2%</i>	419 <i>+22.5%</i>
10	351 <i>-5.4%</i>	344 <i>-7.3%</i>	347 <i>-6.5%</i>	374 <i>+0.8%</i>	341 <i>-8.1%</i>	371 <i>+0.0%</i>	334 <i>-10.0%</i>	341 <i>-8.1%</i>	388 <i>+4.6%</i>	382 <i>+3.0%</i>	408 <i>+10.0%</i>
11	312 <i>-4.9%</i>	345 <i>+5.2%</i>	325 <i>-0.9%</i>	342 <i>+4.3%</i>	353 <i>+7.6%</i>	328 <i>+0.0%</i>	358 <i>+9.1%</i>	322 <i>-1.8%</i>	329 <i>+0.3%</i>	374 <i>+14.0%</i>	368 <i>+12.2%</i>
12	308 <i>-4.6%</i>	264 <i>-18.3%</i>	310 <i>-4.0%</i>	311 <i>-3.7%</i>	309 <i>-4.3%</i>	323 <i>+0.0%</i>	297 <i>-8.0%</i>	324 <i>+0.3%</i>	291 <i>-9.9%</i>	297 <i>-8.0%</i>	338 <i>+4.6%</i>

K-5	1,835 <i>-0.7%</i>	1,861 <i>+0.7%</i>	1,838 <i>-0.5%</i>	1,880 <i>+1.7%</i>	1,857 <i>+0.5%</i>	1,848 <i>+0.0%</i>	1792 <i>-3.0%</i>	1723 <i>-6.8%</i>	1696 <i>-8.2%</i>	1654 <i>-10.5%</i>	1617 <i>-12.5%</i>
6-8	963 <i>-4.8%</i>	973 <i>-3.9%</i>	1,036 <i>+2.4%</i>	974 <i>-3.8%</i>	967 <i>-4.4%</i>	1,012 <i>+0.0%</i>	1076 <i>+6.3%</i>	1096 <i>+8.3%</i>	1071 <i>+5.8%</i>	1021 <i>+0.9%</i>	966 <i>-4.5%</i>
9-12	1,326 <i>-2.8%</i>	1,323 <i>-3.0%</i>	1,372 <i>+0.6%</i>	1,353 <i>-0.8%</i>	1,385 <i>+1.5%</i>	1,364 <i>+0.0%</i>	1338 <i>-1.9%</i>	1384 <i>+1.5%</i>	1399 <i>+2.6%</i>	1471 <i>+7.8%</i>	1533 <i>+12.4%</i>
K-12	4,124 <i>-2.4%</i>	4,157 <i>-1.6%</i>	4,246 <i>+0.5%</i>	4,207 <i>-0.4%</i>	4,209 <i>-0.4%</i>	4,224 <i>+0.0%</i>	4206 <i>-0.4%</i>	4203 <i>-0.5%</i>	4166 <i>-1.4%</i>	4146 <i>-1.8%</i>	4116 <i>-2.6%</i>

Anytown Public Schools - 13/14

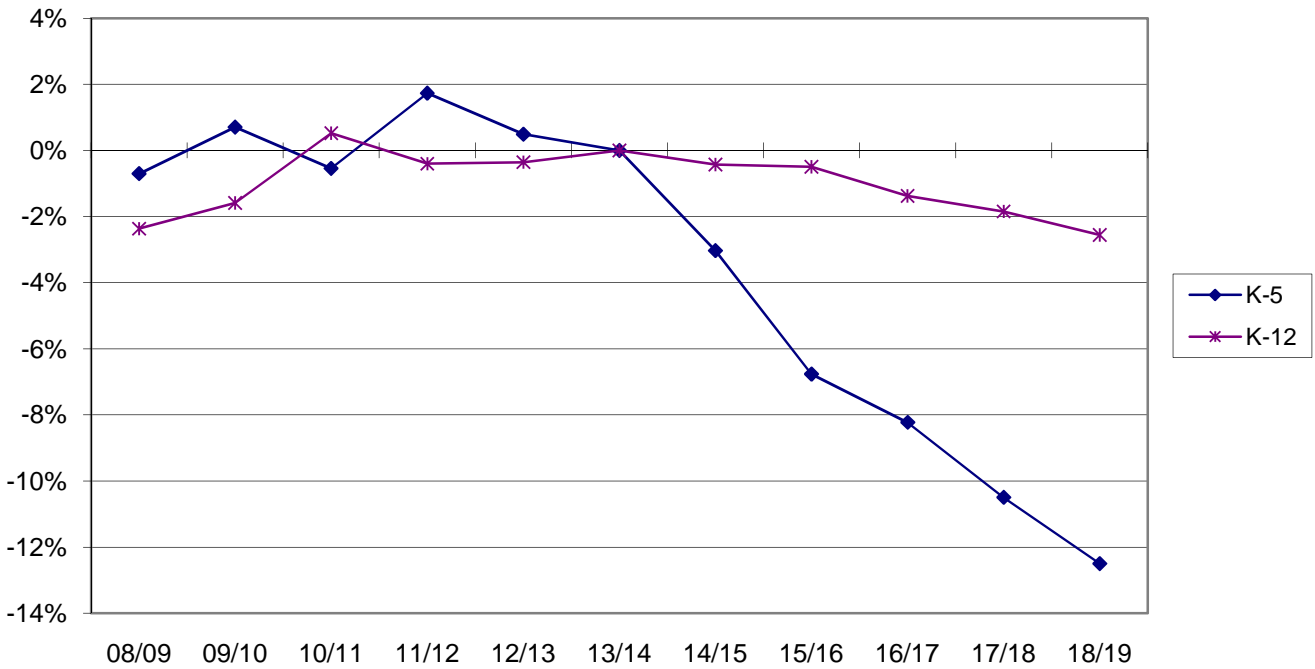
Comparison Between Past, Present and Five Year Projected Enrollment - 08/09 to 18/19

Method 1



Percentage Difference from Current Enrollment (K-6 vs K-12)

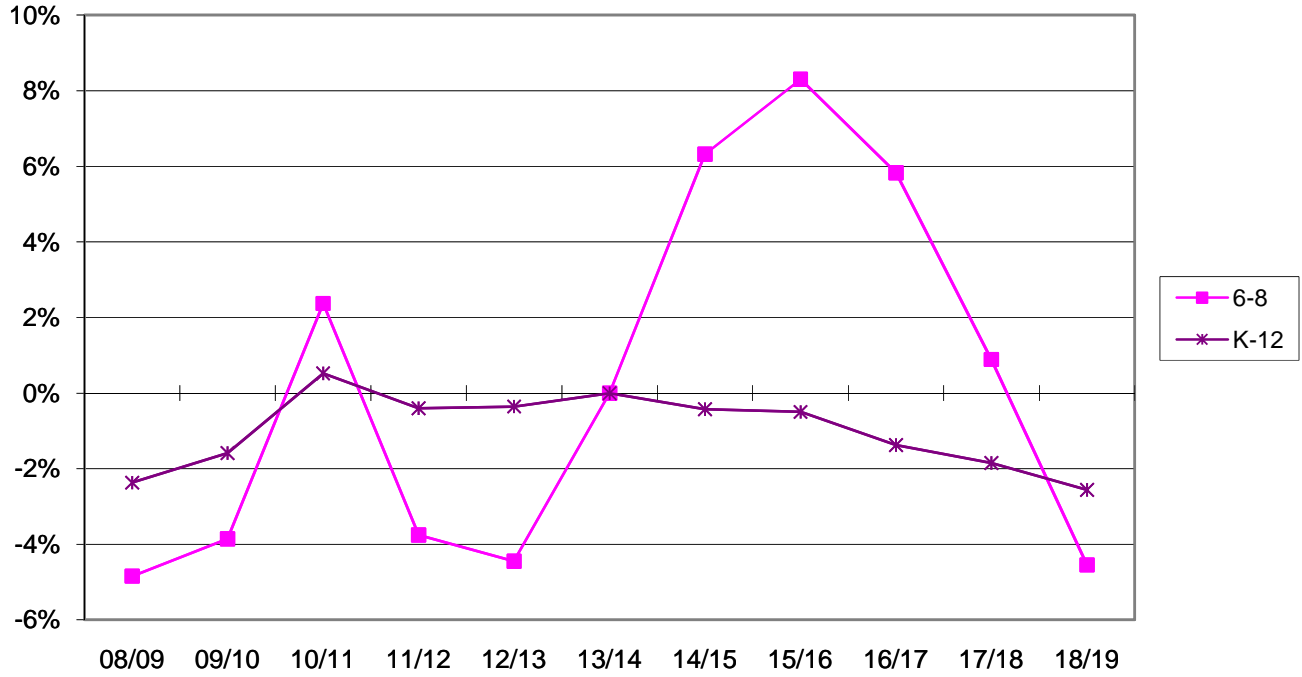
Method 1



Anytown Public Schools - 13/14

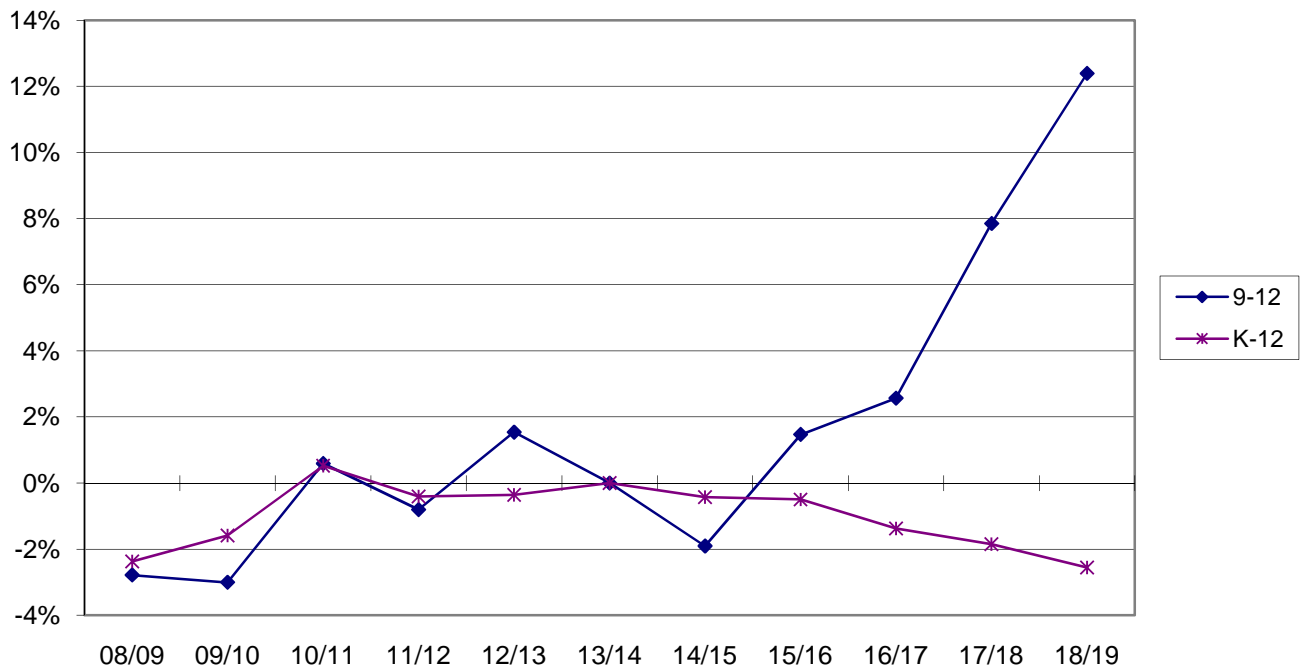
Percentage Difference from Current Enrollment (7-8 vs K-12)

Method 1



Percentage Difference from Current Enrollment (9-12 vs K-12)

Method 1



Anytown Public Schools - 13/14

Table 4 - Enrollment Projected 10 years - Method 1

	14/15	15/16	16/17	17/18	18/19	19/20	20/21	21/22	22/23	23/24
K	309	294	285	271	274	0	0	0	0	0
1	282	262	250	242	230	233	0	0	0	0
2	285	299	278	265	257	244	247	0	0	0
3	285	284	298	277	264	256	243	246	0	0
4	289	291	290	305	283	270	262	249	252	0
5	342	293	295	294	309	286	273	265	252	255
6	362	363	311	313	312	328	304	290	281	268
7	343	368	369	316	318	317	333	309	295	286
8	371	365	391	392	336	338	337	354	329	314
9	349	397	391	418	419	360	362	361	379	352
10	334	341	388	382	408	409	352	354	353	370
11	358	322	329	374	368	393	394	339	341	340
12	297	324	291	297	338	333	355	356	306	308

Anytown Public Schools - 13/14

Table 5 - Projected Enrollment Five Years

Method 2

	14/15	15/16	16/17	17/18	18/19
K	313 5.50%	298 5.50%	289 5.50%	274 5.50%	278 5.50%
1	272 81.96%	257 81.96%	244 81.96%	237 81.96%	225 81.96%
2	280 104.38%	284 104.38%	268 104.38%	255 104.38%	247 104.38%
3	289 101.07%	283 101.07%	287 101.07%	271 101.07%	258 101.07%
4	293 103.68%	300 103.68%	293 103.68%	298 103.68%	281 103.68%
5	348 103.02%	302 103.02%	309 103.02%	302 103.02%	307 103.02%
6	360 105.64%	368 105.64%	319 105.64%	326 105.64%	319 105.64%
7	365 108.39%	390 108.39%	399 108.39%	346 108.39%	353 108.39%
8	345 98.79%	361 98.79%	385 98.79%	394 98.79%	342 98.79%
9	354 108.57%	375 108.57%	392 108.57%	418 108.57%	428 108.57%
10	332 97.12%	344 97.12%	364 97.12%	381 97.12%	406 97.12%
11	357 96.19%	319 96.19%	331 96.19%	350 96.19%	366 96.19%
12	300 91.50%	327 91.50%	292 91.50%	303 91.50%	320 91.50%

K-5	1,795	1,724	1,690	1,637	1,596
6-8	1,070	1,119	1,103	1,066	1,014
9-12	1,343	1,365	1,379	1,452	1,520
K-12	4,208	4,208	4,172	4,155	4,130

Anytown Public Schools - 13/14

Table 6 - Comparison Between Past, Present and Five Year Projected Enrollments - Method 2
 13/14 is the base year. Each year's enrollment is compared to base year. Numbers in *italic* show percent of current enrollment

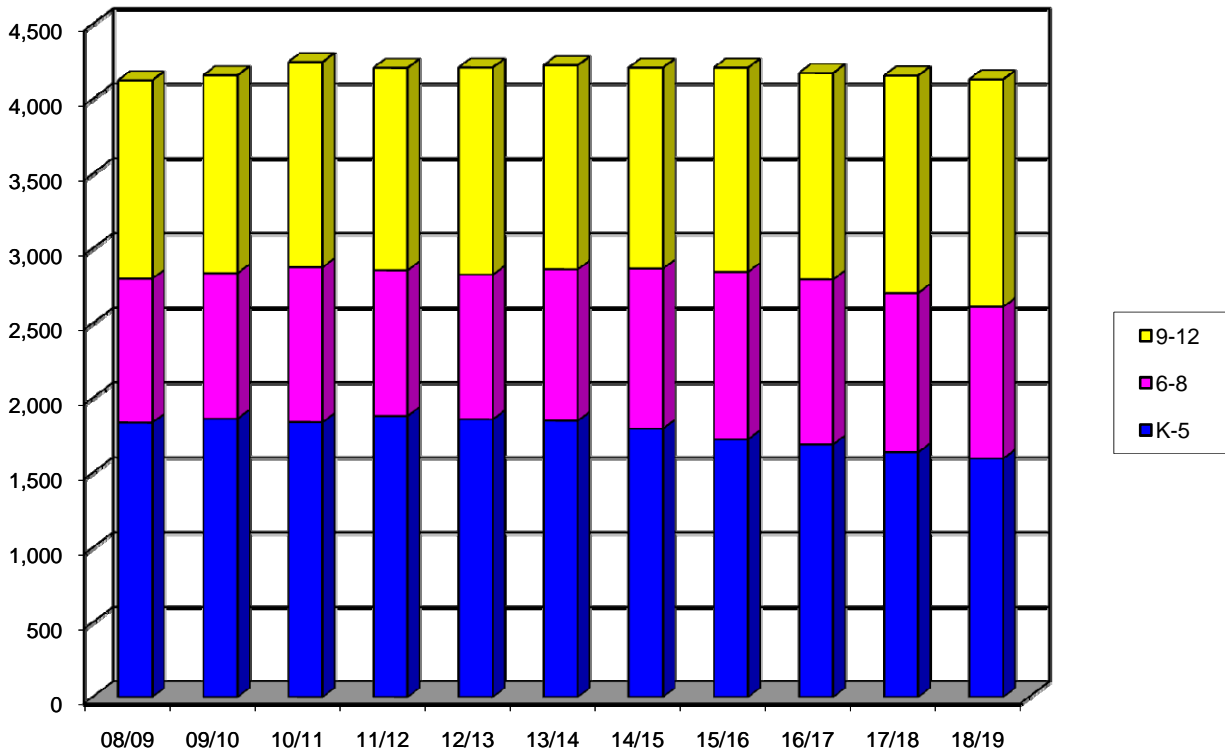
	08/09	09/10	10/11	11/12	12/13	13/14	14/15	15/16	16/17	17/18	18/19
K	328 <i>-1.2%</i>	364 <i>+9.6%</i>	307 <i>-7.5%</i>	331 <i>-0.3%</i>	327 <i>-1.5%</i>	332 <i>+0.0%</i>	313 <i>-5.7%</i>	298 <i>-10.2%</i>	289 <i>-13.0%</i>	274 <i>-17.5%</i>	278 <i>-16.3%</i>
1	296 <i>+10.4%</i>	282 <i>+5.2%</i>	298 <i>+11.2%</i>	282 <i>+5.2%</i>	274 <i>+2.2%</i>	268 <i>+0.0%</i>	272 <i>+1.5%</i>	257 <i>-4.1%</i>	244 <i>-9.0%</i>	237 <i>-11.6%</i>	225 <i>-16.0%</i>
2	310 <i>+8.4%</i>	311 <i>+8.7%</i>	322 <i>+12.6%</i>	322 <i>+12.6%</i>	280 <i>-2.1%</i>	286 <i>+0.0%</i>	280 <i>-2.1%</i>	284 <i>-0.7%</i>	268 <i>-6.3%</i>	255 <i>-10.8%</i>	247 <i>-13.6%</i>
3	304 <i>+7.4%</i>	305 <i>+7.8%</i>	304 <i>+7.4%</i>	319 <i>+12.7%</i>	326 <i>+15.2%</i>	283 <i>+0.0%</i>	289 <i>+2.1%</i>	283 <i>+0.0%</i>	287 <i>+1.4%</i>	271 <i>-4.2%</i>	258 <i>-8.8%</i>
4	292 <i>-13.6%</i>	300 <i>-11.2%</i>	303 <i>-10.4%</i>	322 <i>-4.7%</i>	331 <i>-2.1%</i>	338 <i>+0.0%</i>	293 <i>-13.3%</i>	300 <i>-11.2%</i>	293 <i>-13.3%</i>	298 <i>-11.8%</i>	281 <i>-16.9%</i>
5	305 <i>-10.6%</i>	299 <i>-12.3%</i>	304 <i>-10.9%</i>	304 <i>-10.9%</i>	319 <i>-6.5%</i>	341 <i>+0.0%</i>	348 <i>+2.1%</i>	302 <i>-11.4%</i>	309 <i>-9.4%</i>	302 <i>-11.4%</i>	307 <i>-10.0%</i>
6	313 <i>-7.1%</i>	318 <i>-5.6%</i>	328 <i>-2.7%</i>	321 <i>-4.7%</i>	322 <i>-4.5%</i>	337 <i>+0.0%</i>	360 <i>+6.8%</i>	368 <i>+9.2%</i>	319 <i>-5.3%</i>	326 <i>-3.3%</i>	319 <i>-5.3%</i>
7	329 <i>-5.7%</i>	314 <i>-10.0%</i>	322 <i>-7.7%</i>	313 <i>-10.3%</i>	330 <i>-5.4%</i>	349 <i>+0.0%</i>	365 <i>+4.6%</i>	390 <i>+11.7%</i>	399 <i>+14.3%</i>	346 <i>-0.9%</i>	353 <i>+1.1%</i>
8	321 <i>-1.5%</i>	341 <i>+4.6%</i>	386 <i>+18.4%</i>	340 <i>+4.3%</i>	315 <i>-3.4%</i>	326 <i>+0.0%</i>	345 <i>+5.8%</i>	361 <i>+10.7%</i>	385 <i>+18.1%</i>	394 <i>+20.9%</i>	342 <i>+4.9%</i>
9	355 <i>+3.8%</i>	370 <i>+8.2%</i>	390 <i>+14.0%</i>	326 <i>-4.7%</i>	382 <i>+11.7%</i>	342 <i>+0.0%</i>	354 <i>+3.5%</i>	375 <i>+9.6%</i>	392 <i>+14.6%</i>	418 <i>+22.2%</i>	428 <i>+25.1%</i>
10	351 <i>-5.4%</i>	344 <i>-7.3%</i>	347 <i>-6.5%</i>	374 <i>+0.8%</i>	341 <i>-8.1%</i>	371 <i>+0.0%</i>	332 <i>-10.5%</i>	344 <i>-7.3%</i>	364 <i>-1.9%</i>	381 <i>+2.7%</i>	406 <i>+9.4%</i>
11	312 <i>-4.9%</i>	345 <i>+5.2%</i>	325 <i>-0.9%</i>	342 <i>+4.3%</i>	353 <i>+7.6%</i>	328 <i>+0.0%</i>	357 <i>+8.8%</i>	319 <i>-2.7%</i>	331 <i>+0.9%</i>	350 <i>+6.7%</i>	366 <i>+11.6%</i>
12	308 <i>-4.6%</i>	264 <i>-18.3%</i>	310 <i>-4.0%</i>	311 <i>-3.7%</i>	309 <i>-4.3%</i>	323 <i>+0.0%</i>	300 <i>-7.1%</i>	327 <i>+1.2%</i>	292 <i>-9.6%</i>	303 <i>-6.2%</i>	320 <i>-0.9%</i>

K-5	1,835 <i>-0.7%</i>	1,861 <i>+0.7%</i>	1,838 <i>-0.5%</i>	1,880 <i>+1.7%</i>	1,857 <i>+0.5%</i>	1,848 <i>+0.0%</i>	1795 <i>-2.9%</i>	1724 <i>-6.7%</i>	1690 <i>-8.5%</i>	1637 <i>-11.4%</i>	1596 <i>-13.6%</i>
6-8	963 <i>-4.8%</i>	973 <i>-3.9%</i>	1,036 <i>+2.4%</i>	974 <i>-3.8%</i>	967 <i>-4.4%</i>	1,012 <i>+0.0%</i>	1070 <i>+5.7%</i>	1119 <i>+10.6%</i>	1103 <i>+9.0%</i>	1066 <i>+5.3%</i>	1014 <i>+0.2%</i>
9-12	1,326 <i>-2.8%</i>	1,323 <i>-3.0%</i>	1,372 <i>+0.6%</i>	1,353 <i>-0.8%</i>	1,385 <i>+1.5%</i>	1,364 <i>+0.0%</i>	1343 <i>-1.5%</i>	1365 <i>+0.1%</i>	1379 <i>+1.1%</i>	1452 <i>+6.5%</i>	1520 <i>+11.4%</i>
K-12	4,124 <i>-2.4%</i>	4,157 <i>-1.6%</i>	4,246 <i>+0.5%</i>	4,207 <i>-0.4%</i>	4,209 <i>-0.4%</i>	4,224 <i>+0.0%</i>	4208 <i>-0.4%</i>	4208 <i>-0.4%</i>	4172 <i>-1.2%</i>	4155 <i>-1.6%</i>	4130 <i>-2.2%</i>

Anytown Public Schools - 13/14

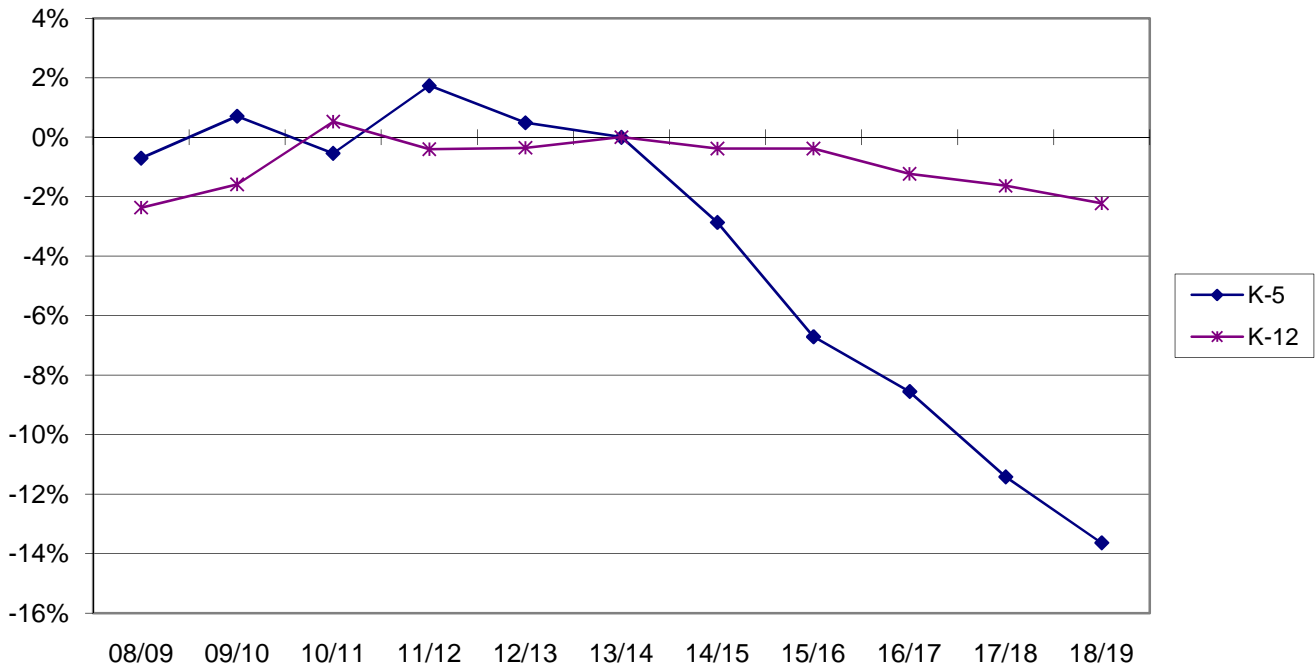
Comparison Between Past, Present and Five Year Projected Enrollment - 08/09 to 18/19

Method 2



Percentage Difference from Current Enrollment (K-6 vs K-12)

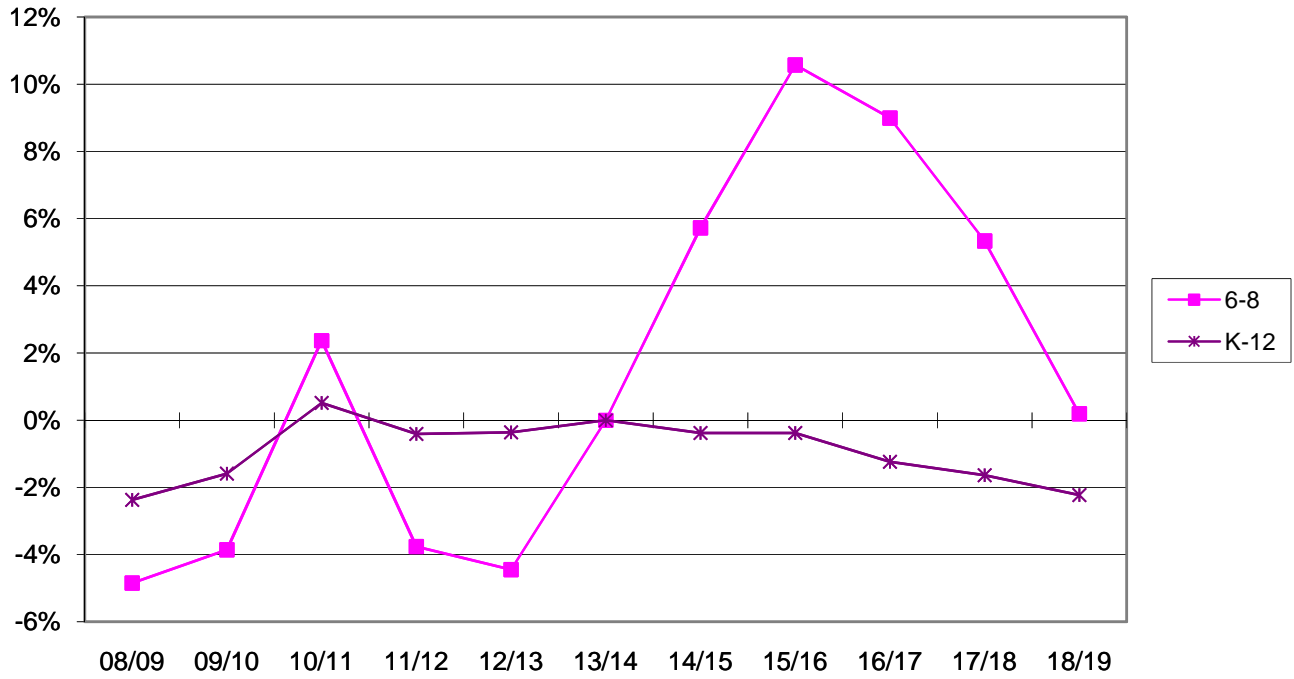
Method 2



Anytown Public Schools - 13/14

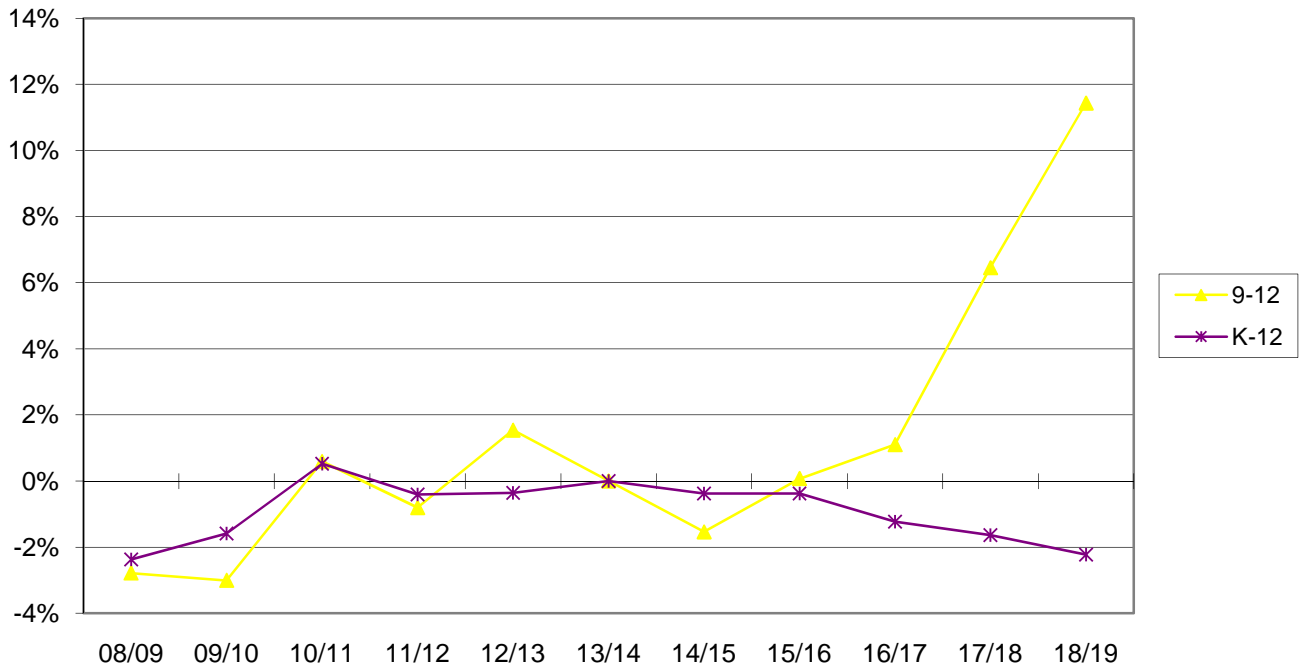
Percentage Difference from Current Enrollment (7-8 vs K-12)

Method 2



Percentage Difference from Current Enrollment (9-12 vs K-12)

Method 2



Anytown Public Schools - 13/14

Table 7 - Enrollment Projected 10 years - Method 2

	14/15	15/16	16/17	17/18	18/19	19/20	20/21	21/22	22/23	23/24
K	313	298	289	274	278	0	0	0	0	0
1	272	257	244	237	225	228	0	0	0	0
2	280	284	268	255	247	235	238	0	0	0
3	289	283	287	271	258	250	238	241	0	0
4	293	300	293	298	281	267	259	247	250	0
5	348	302	309	302	307	289	275	267	254	258
6	360	368	319	326	319	324	305	291	282	268
7	365	390	399	346	353	346	351	331	315	306
8	345	361	385	394	342	349	342	347	327	311
9	354	375	392	418	428	371	379	371	377	355
10	332	344	364	381	406	416	360	368	360	366
11	357	319	331	350	366	391	400	346	354	346
12	300	327	292	303	320	335	358	366	317	324

Anytown Public Schools - 13/14

Table 8 - Projected Enrollment Five Years

Method 3

	14/15	15/16	16/17	17/18	18/19
K	311 5.47%	296 5.47%	287 5.47%	273 5.47%	276 5.47%
1	277 83.42%	259 83.42%	247 83.42%	239 83.42%	228 83.42%
2	282 105.29%	292 105.29%	273 105.29%	260 105.29%	252 105.29%
3	287 100.29%	283 100.29%	293 100.29%	274 100.29%	261 100.29%
4	291 102.98%	296 102.98%	291 102.98%	302 102.98%	282 102.98%
5	345 102.13%	297 102.13%	302 102.13%	297 102.13%	308 102.13%
6	361 105.93%	365 105.93%	315 105.93%	320 105.93%	315 105.93%
7	354 105.01%	379 105.01%	383 105.01%	331 105.01%	336 105.01%
8	358 102.55%	363 102.55%	389 102.55%	393 102.55%	339 102.55%
9	351 107.79%	386 107.79%	391 107.79%	419 107.79%	424 107.79%
10	333 97.39%	342 97.39%	376 97.39%	381 97.39%	408 97.39%
11	357 96.28%	321 96.28%	329 96.28%	362 96.28%	367 96.28%
12	298 90.95%	325 90.95%	292 90.95%	299 90.95%	329 90.95%

K-5	1,793	1,723	1,693	1,645	1,607
6-8	1,073	1,107	1,087	1,044	990
9-12	1,339	1,374	1,388	1,461	1,528
K-12	4,205	4,204	4,168	4,150	4,125

Anytown Public Schools - 13/14

Table 9 - Comparison Between Past, Present and Five Year Projected Enrollments - Method 3
13/14 is the base year. Numbers in italic show percent of current enrollment

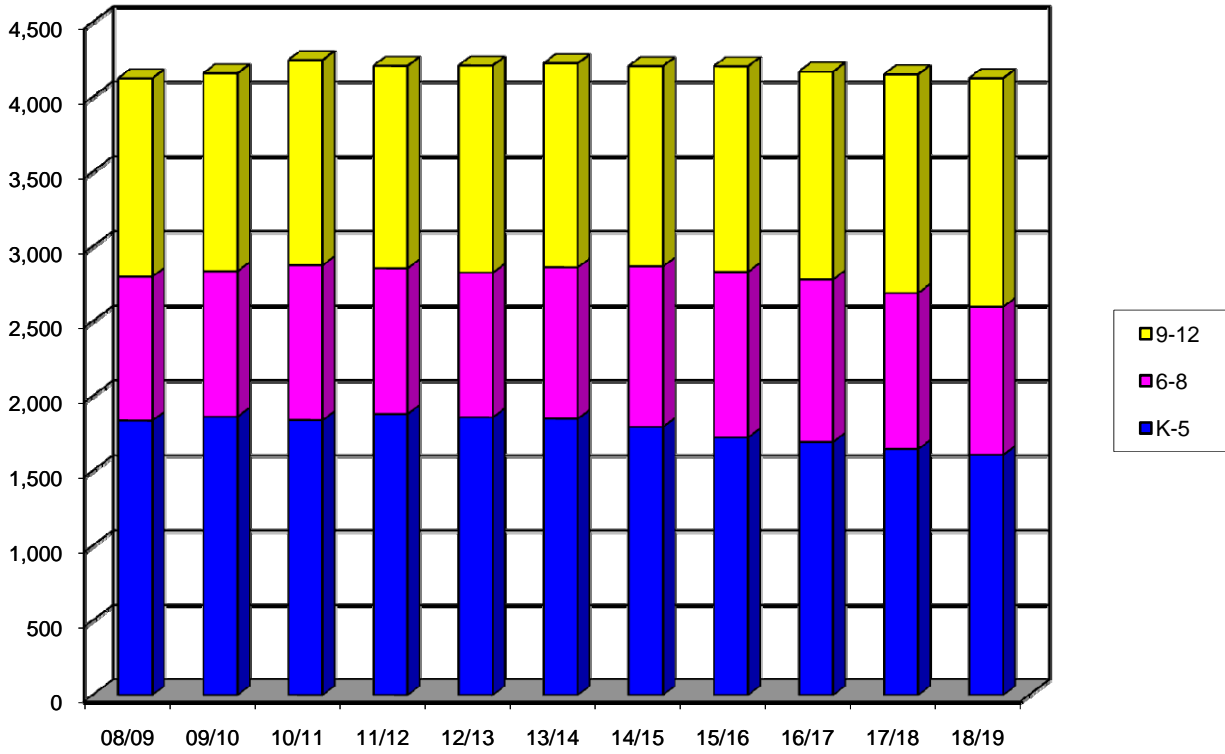
	08/09	09/10	10/11	11/12	12/13	13/14	14/15	15/16	16/17	17/18	18/19
K	328 <i>-1.2%</i>	364 <i>+9.6%</i>	307 <i>-7.5%</i>	331 <i>-0.3%</i>	327 <i>-1.5%</i>	332 <i>+0.0%</i>	311 <i>-6.3%</i>	296 <i>-10.8%</i>	287 <i>-13.6%</i>	273 <i>-17.8%</i>	276 <i>-16.9%</i>
1	296 <i>+10.4%</i>	282 <i>+5.2%</i>	298 <i>+11.2%</i>	282 <i>+5.2%</i>	274 <i>+2.2%</i>	268 <i>+0.0%</i>	277 <i>+3.4%</i>	259 <i>-3.4%</i>	247 <i>-7.8%</i>	239 <i>-10.8%</i>	228 <i>-14.9%</i>
2	310 <i>+8.4%</i>	311 <i>+8.7%</i>	322 <i>+12.6%</i>	322 <i>+12.6%</i>	280 <i>-2.1%</i>	286 <i>+0.0%</i>	282 <i>-1.4%</i>	292 <i>+2.1%</i>	273 <i>-4.5%</i>	260 <i>-9.1%</i>	252 <i>-11.9%</i>
3	304 <i>+7.4%</i>	305 <i>+7.8%</i>	304 <i>+7.4%</i>	319 <i>+12.7%</i>	326 <i>+15.2%</i>	283 <i>+0.0%</i>	287 <i>+1.4%</i>	283 <i>+0.0%</i>	293 <i>+3.5%</i>	274 <i>-3.2%</i>	261 <i>-7.8%</i>
4	292 <i>-13.6%</i>	300 <i>-11.2%</i>	303 <i>-10.4%</i>	322 <i>-4.7%</i>	331 <i>-2.1%</i>	338 <i>+0.0%</i>	291 <i>-13.9%</i>	296 <i>-12.4%</i>	291 <i>-13.9%</i>	302 <i>-10.7%</i>	282 <i>-16.6%</i>
5	305 <i>-10.6%</i>	299 <i>-12.3%</i>	304 <i>-10.9%</i>	304 <i>-10.9%</i>	319 <i>-6.5%</i>	341 <i>+0.0%</i>	345 <i>+1.2%</i>	297 <i>-12.9%</i>	302 <i>-11.4%</i>	297 <i>-12.9%</i>	308 <i>-9.7%</i>
6	313 <i>-7.1%</i>	318 <i>-5.6%</i>	328 <i>-2.7%</i>	321 <i>-4.7%</i>	322 <i>-4.5%</i>	337 <i>+0.0%</i>	361 <i>+7.1%</i>	365 <i>+8.3%</i>	315 <i>-6.5%</i>	320 <i>-5.0%</i>	315 <i>-6.5%</i>
7	329 <i>-5.7%</i>	314 <i>-10.0%</i>	322 <i>-7.7%</i>	313 <i>-10.3%</i>	330 <i>-5.4%</i>	349 <i>+0.0%</i>	354 <i>+1.4%</i>	379 <i>+8.6%</i>	383 <i>+9.7%</i>	331 <i>-5.2%</i>	336 <i>-3.7%</i>
8	321 <i>-1.5%</i>	341 <i>+4.6%</i>	386 <i>+18.4%</i>	340 <i>+4.3%</i>	315 <i>-3.4%</i>	326 <i>+0.0%</i>	358 <i>+9.8%</i>	363 <i>+11.3%</i>	389 <i>+19.3%</i>	393 <i>+20.6%</i>	339 <i>+4.0%</i>
9	355 <i>+3.8%</i>	370 <i>+8.2%</i>	390 <i>+14.0%</i>	326 <i>-4.7%</i>	382 <i>+11.7%</i>	342 <i>+0.0%</i>	351 <i>+2.6%</i>	386 <i>+12.9%</i>	391 <i>+14.3%</i>	419 <i>+22.5%</i>	424 <i>+24.0%</i>
10	351 <i>-5.4%</i>	344 <i>-7.3%</i>	347 <i>-6.5%</i>	374 <i>+0.8%</i>	341 <i>-8.1%</i>	371 <i>+0.0%</i>	333 <i>-10.2%</i>	342 <i>-7.8%</i>	376 <i>+1.3%</i>	381 <i>+2.7%</i>	408 <i>+10.0%</i>
11	312 <i>-4.9%</i>	345 <i>+5.2%</i>	325 <i>-0.9%</i>	342 <i>+4.3%</i>	353 <i>+7.6%</i>	328 <i>+0.0%</i>	357 <i>+8.8%</i>	321 <i>-2.1%</i>	329 <i>+0.3%</i>	362 <i>+10.4%</i>	367 <i>+11.9%</i>
12	308 <i>-4.6%</i>	264 <i>-18.3%</i>	310 <i>-4.0%</i>	311 <i>-3.7%</i>	309 <i>-4.3%</i>	323 <i>+0.0%</i>	298 <i>-7.7%</i>	325 <i>+0.6%</i>	292 <i>-9.6%</i>	299 <i>-7.4%</i>	329 <i>+1.9%</i>

K-5	1,835 <i>-0.7%</i>	1,861 <i>+0.7%</i>	1,838 <i>-0.5%</i>	1,880 <i>+1.7%</i>	1,857 <i>+0.5%</i>	1,848 <i>+0.0%</i>	1793 <i>-3.0%</i>	1723 <i>-6.8%</i>	1693 <i>-8.4%</i>	1645 <i>-11.0%</i>	1607 <i>-13.0%</i>
6-8	963 <i>-4.8%</i>	973 <i>-3.9%</i>	1,036 <i>+2.4%</i>	974 <i>-3.8%</i>	967 <i>-4.4%</i>	1,012 <i>+0.0%</i>	1073 <i>+6.0%</i>	1107 <i>+9.4%</i>	1087 <i>+7.4%</i>	1044 <i>+3.2%</i>	990 <i>-2.2%</i>
9-12	1,326 <i>-2.8%</i>	1,323 <i>-3.0%</i>	1,372 <i>+0.6%</i>	1,353 <i>-0.8%</i>	1,385 <i>+1.5%</i>	1,364 <i>+0.0%</i>	1339 <i>-1.8%</i>	1374 <i>+0.7%</i>	1388 <i>+1.8%</i>	1461 <i>+7.1%</i>	1528 <i>+12.0%</i>
K-12	4,124 <i>-2.4%</i>	4,157 <i>-1.6%</i>	4,246 <i>+0.5%</i>	4,207 <i>-0.4%</i>	4,209 <i>-0.4%</i>	4,224 <i>+0.0%</i>	4205 <i>-0.4%</i>	4204 <i>-0.5%</i>	4168 <i>-1.3%</i>	4150 <i>-1.8%</i>	4125 <i>-2.3%</i>

Anytown Public Schools - 13/14

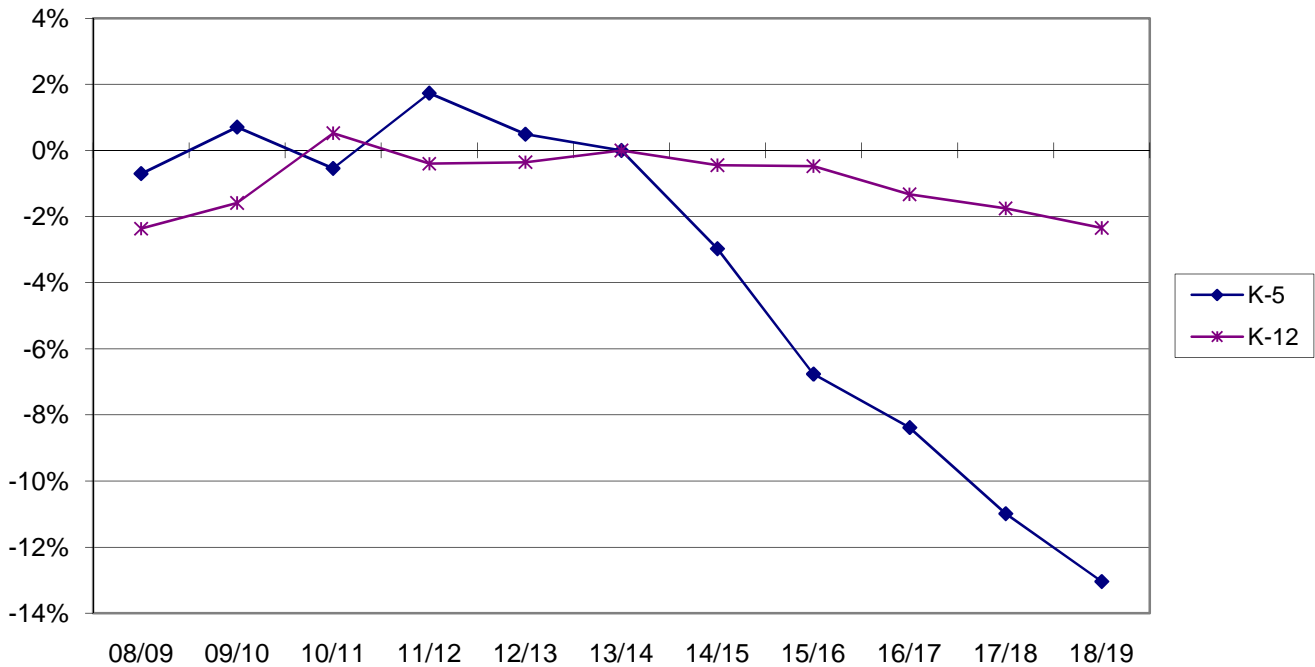
Comparison Between Past, Present and Five Year Projected Enrollment - 08/09 to 18/19

Method 3



Percentage Difference from Current Enrollment (K-6 vs K-12)

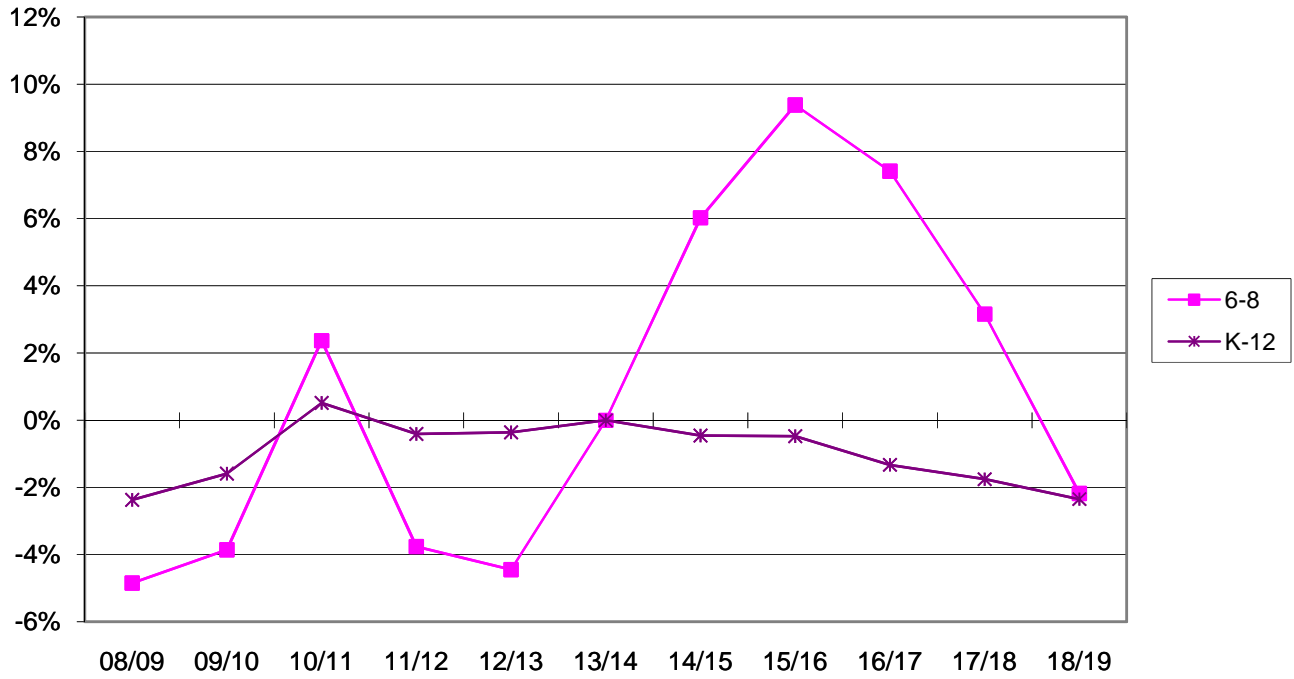
Method 3



Anytown Public Schools - 13/14

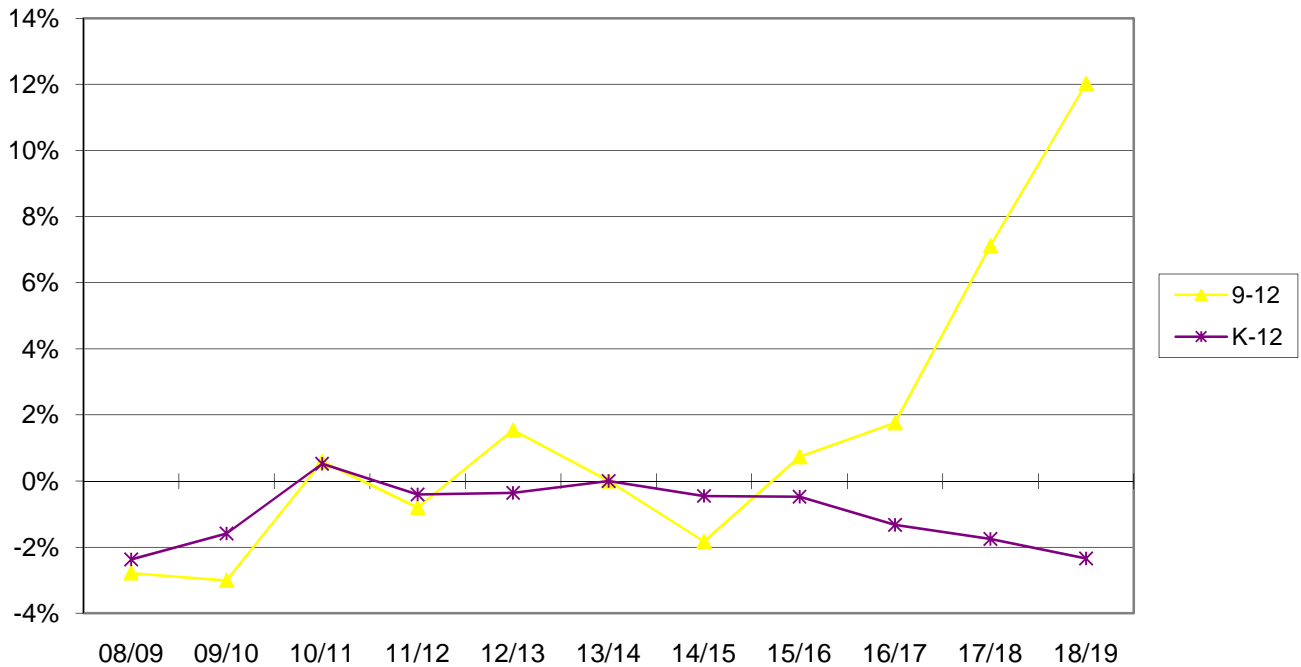
Percentage Difference from Current Enrollment (7-8 vs K-12)

Method 3



Percentage Difference from Current Enrollment (9-12 vs K-12)

Method 3



Anytown Public Schools - 13/14

Table 10 - Enrollment Projected 10 years - Method 3

	14/15	15/16	16/17	17/18	18/19	19/20	20/21	21/22	22/23	23/24
K	311	296	287	273	276	0	0	0	0	0
1	277	259	247	239	228	230	0	0	0	0
2	282	292	273	260	252	240	242	0	0	0
3	287	283	293	274	261	253	241	243	0	0
4	291	296	291	302	282	269	261	248	250	0
5	345	297	302	297	308	288	275	267	253	255
6	361	365	315	320	315	326	305	291	283	268
7	354	379	383	331	336	331	342	320	306	297
8	358	363	389	393	339	345	339	351	328	314
9	351	386	391	419	424	365	372	365	378	354
10	333	342	376	381	408	413	355	362	355	368
11	357	321	329	362	367	393	398	342	349	342
12	298	325	292	299	329	334	357	362	311	317

Anytown Public Schools - 13/14

Table 11 - Percentage Differences

Actual 13/14 enrollment compared to projected enrollment for each method

Grade	Actual Enrollment	Method 1		Method 2		Method 3	
		Enrollment	% Diff.	Enrollment	% Diff.	Enrollment	% Diff.
K	332	327	-1.6%	325	-2.2%	326	-1.9%
1	268	280	4.3%	271	1.0%	275	2.7%
2	286	292	2.1%	272	-5.1%	282	-1.4%
3	283	278	-2.0%	283	0.2%	280	-0.9%
4	338	332	-1.7%	338	0.1%	335	-0.8%
5	341	334	-2.2%	328	-4.0%	331	-3.1%
6	337	339	0.7%	338	0.3%	339	0.5%
7	349	322	-8.4%	331	-5.4%	326	-6.9%
8	326	357	8.7%	332	1.8%	345	5.4%
9	342	336	-1.8%	354	3.4%	345	0.8%
10	371	374	0.7%	400	7.2%	387	4.0%
11	328	329	0.2%	322	-1.9%	325	-0.8%
12	323	318	-1.5%	319	-1.3%	319	-1.4%

K-5	1,848	1,842	-0.3%	1,817	-1.7%	1,830	-1.0%
6-8	1,012	1,018	0.6%	1,001	-1.1%	1,010	-0.2%
9-12	1,364	1,356	-0.6%	1,394	2.2%	1,375	0.8%
K-12	4,224	4,217	-0.2%	4,212	-0.3%	4,215	-0.2%

Anytown Public Schools - 13/14

Projected Teacher Requirements

Pupil:Teacher Ratio 18:1

	14/15	15/16	16/17	17/18	18/19	19/20	20/21	21/22	22/23	23/24
K	17.2	16.3	15.8	15.1	15.2	0.0	0.0	0.0	0.0	0.0
1	15.7	14.6	13.9	13.4	12.8	12.9	0.0	0.0	0.0	0.0
2	15.8	16.6	15.4	14.7	14.3	13.6	13.7	0.0	0.0	0.0
3	15.8	15.8	16.6	15.4	14.7	14.2	13.5	13.7	0.0	0.0
4	16.1	16.2	16.1	16.9	15.7	15.0	14.6	13.8	14.0	0.0
5	19.0	16.3	16.4	16.3	17.2	15.9	15.2	14.7	14.0	14.2
6	20.1	20.2	17.3	17.4	17.3	18.2	16.9	16.1	15.6	14.9
7	19.1	20.4	20.5	17.6	17.7	17.6	18.5	17.2	16.4	15.9
8	20.6	20.3	21.7	21.8	18.7	18.8	18.7	19.7	18.3	17.4
9	19.4	22.1	21.7	23.2	23.3	20.0	20.1	20.1	21.1	19.6
10	18.6	18.9	21.6	21.2	22.7	22.7	19.6	19.7	19.6	20.6
11	19.9	17.9	18.3	20.8	20.4	21.8	21.9	18.8	18.9	18.9
12	16.5	18.0	16.2	16.5	18.8	18.5	19.7	19.8	17.0	17.1

Anytown Public Schools - 13/14

Projected Teacher Requirements

Pupil:Teacher Ratio 20:1

	14/15	15/16	16/17	17/18	18/19	19/20	20/21	21/22	22/23	23/24
K	15.5	14.7	14.3	13.6	13.7	0.0	0.0	0.0	0.0	0.0
1	14.1	13.1	12.5	12.1	11.5	11.7	0.0	0.0	0.0	0.0
2	14.3	15.0	13.9	13.3	12.9	12.2	12.4	0.0	0.0	0.0
3	14.3	14.2	14.9	13.9	13.2	12.8	12.2	12.3	0.0	0.0
4	14.5	14.6	14.5	15.3	14.2	13.5	13.1	12.5	12.6	0.0
5	17.1	14.7	14.8	14.7	15.5	14.3	13.7	13.3	12.6	12.8
6	18.1	18.2	15.6	15.7	15.6	16.4	15.2	14.5	14.1	13.4
7	17.2	18.4	18.5	15.8	15.9	15.9	16.7	15.5	14.8	14.3
8	18.6	18.3	19.6	19.6	16.8	16.9	16.9	17.7	16.5	15.7
9	17.5	19.9	19.6	20.9	21.0	18.0	18.1	18.1	19.0	17.6
10	16.7	17.1	19.4	19.1	20.4	20.5	17.6	17.7	17.7	18.5
11	17.9	16.1	16.5	18.7	18.4	19.7	19.7	17.0	17.1	17.0
12	14.9	16.2	14.6	14.9	16.9	16.7	17.8	17.8	15.3	15.4

Anytown Public Schools - 13/14

Projected Teacher Requirements

Pupil:Teacher Ratio 22:1

	14/15	15/16	16/17	17/18	18/19	19/20	20/21	21/22	22/23	23/24
K	14.0	13.4	13.0	12.3	12.5	0.0	0.0	0.0	0.0	0.0
1	12.8	11.9	11.4	11.0	10.5	10.6	0.0	0.0	0.0	0.0
2	13.0	13.6	12.6	12.0	11.7	11.1	11.2	0.0	0.0	0.0
3	13.0	12.9	13.5	12.6	12.0	11.6	11.0	11.2	0.0	0.0
4	13.1	13.2	13.2	13.9	12.9	12.3	11.9	11.3	11.5	0.0
5	15.5	13.3	13.4	13.4	14.0	13.0	12.4	12.0	11.5	11.6
6	16.5	16.5	14.1	14.2	14.2	14.9	13.8	13.2	12.8	12.2
7	15.6	16.7	16.8	14.4	14.5	14.4	15.1	14.0	13.4	13.0
8	16.9	16.6	17.8	17.8	15.3	15.4	15.3	16.1	15.0	14.3
9	15.9	18.0	17.8	19.0	19.0	16.4	16.5	16.4	17.2	16.0
10	15.2	15.5	17.6	17.4	18.5	18.6	16.0	16.1	16.0	16.8
11	16.3	14.6	15.0	17.0	16.7	17.9	17.9	15.4	15.5	15.5
12	13.5	14.7	13.2	13.5	15.4	15.1	16.1	16.2	13.9	14.0

Anytown Public Schools - 13/14

Projected Teacher Requirements

Pupil:Teacher Ratio 24:1

	14/15	15/16	16/17	17/18	18/19	19/20	20/21	21/22	22/23	23/24
K	12.9	12.3	11.9	11.3	11.4	0.0	0.0	0.0	0.0	0.0
1	11.8	10.9	10.4	10.1	9.6	9.7	0.0	0.0	0.0	0.0
2	11.9	12.5	11.6	11.0	10.7	10.2	10.3	0.0	0.0	0.0
3	11.9	11.8	12.4	11.5	11.0	10.7	10.1	10.3	0.0	0.0
4	12.0	12.1	12.1	12.7	11.8	11.3	10.9	10.4	10.5	0.0
5	14.3	12.2	12.3	12.3	12.9	11.9	11.4	11.0	10.5	10.6
6	15.1	15.1	13.0	13.0	13.0	13.7	12.7	12.1	11.7	11.2
7	14.3	15.3	15.4	13.2	13.3	13.2	13.9	12.9	12.3	11.9
8	15.5	15.2	16.3	16.3	14.0	14.1	14.0	14.8	13.7	13.1
9	14.5	16.5	16.3	17.4	17.5	15.0	15.1	15.0	15.8	14.7
10	13.9	14.2	16.2	15.9	17.0	17.0	14.7	14.8	14.7	15.4
11	14.9	13.4	13.7	15.6	15.3	16.4	16.4	14.1	14.2	14.2
12	12.4	13.5	12.1	12.4	14.1	13.9	14.8	14.8	12.8	12.8

Anytown Public Schools - 13/14

Projected Teacher Requirements

Pupil:Teacher Ratio 26:1

	14/15	15/16	16/17	17/18	18/19	19/20	20/21	21/22	22/23	23/24
K	11.9	11.3	11.0	10.4	10.5	0.0	0.0	0.0	0.0	0.0
1	10.8	10.1	9.6	9.3	8.8	9.0	0.0	0.0	0.0	0.0
2	11.0	11.5	10.7	10.2	9.9	9.4	9.5	0.0	0.0	0.0
3	11.0	10.9	11.5	10.7	10.2	9.8	9.3	9.5	0.0	0.0
4	11.1	11.2	11.2	11.7	10.9	10.4	10.1	9.6	9.7	0.0
5	13.2	11.3	11.3	11.3	11.9	11.0	10.5	10.2	9.7	9.8
6	13.9	14.0	12.0	12.0	12.0	12.6	11.7	11.2	10.8	10.3
7	13.2	14.2	14.2	12.2	12.2	12.2	12.8	11.9	11.3	11.0
8	14.3	14.0	15.0	15.1	12.9	13.0	13.0	13.6	12.7	12.1
9	13.4	15.3	15.0	16.1	16.1	13.8	13.9	13.9	14.6	13.5
10	12.8	13.1	14.9	14.7	15.7	15.7	13.5	13.6	13.6	14.2
11	13.8	12.4	12.7	14.4	14.2	15.1	15.2	13.0	13.1	13.1
12	11.4	12.5	11.2	11.4	13.0	12.8	13.7	13.7	11.8	11.8

Anytown Public Schools - 13/14

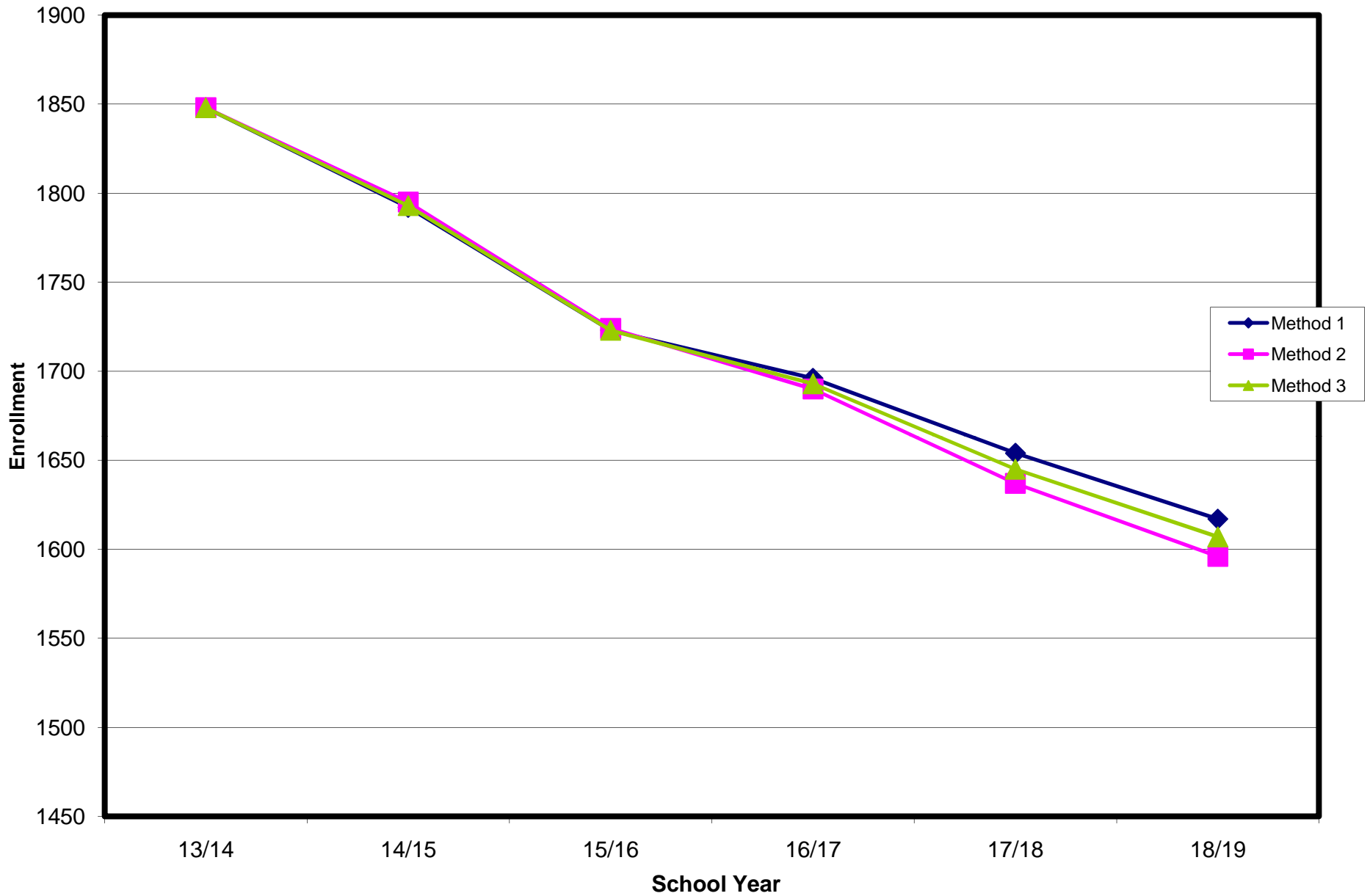
Projected Teacher Requirements

Pupil:Teacher Ratio 28:1

	14/15	15/16	16/17	17/18	18/19	19/20	20/21	21/22	22/23	23/24
K	11.0	10.5	10.2	9.7	9.8	0.0	0.0	0.0	0.0	0.0
1	10.1	9.4	8.9	8.6	8.2	8.3	0.0	0.0	0.0	0.0
2	10.2	10.7	9.9	9.5	9.2	8.7	8.8	0.0	0.0	0.0
3	10.2	10.1	10.6	9.9	9.4	9.1	8.7	8.8	0.0	0.0
4	10.3	10.4	10.4	10.9	10.1	9.6	9.4	8.9	9.0	0.0
5	12.2	10.5	10.5	10.5	11.0	10.2	9.8	9.5	9.0	9.1
6	12.9	13.0	11.1	11.2	11.1	11.7	10.9	10.4	10.0	9.6
7	12.3	13.1	13.2	11.3	11.4	11.3	11.9	11.0	10.5	10.2
8	13.3	13.0	14.0	14.0	12.0	12.1	12.0	12.6	11.8	11.2
9	12.5	14.2	14.0	14.9	15.0	12.9	12.9	12.9	13.5	12.6
10	11.9	12.2	13.9	13.6	14.6	14.6	12.6	12.6	12.6	13.2
11	12.8	11.5	11.8	13.4	13.1	14.0	14.1	12.1	12.2	12.1
12	10.6	11.6	10.4	10.6	12.1	11.9	12.7	12.7	10.9	11.0

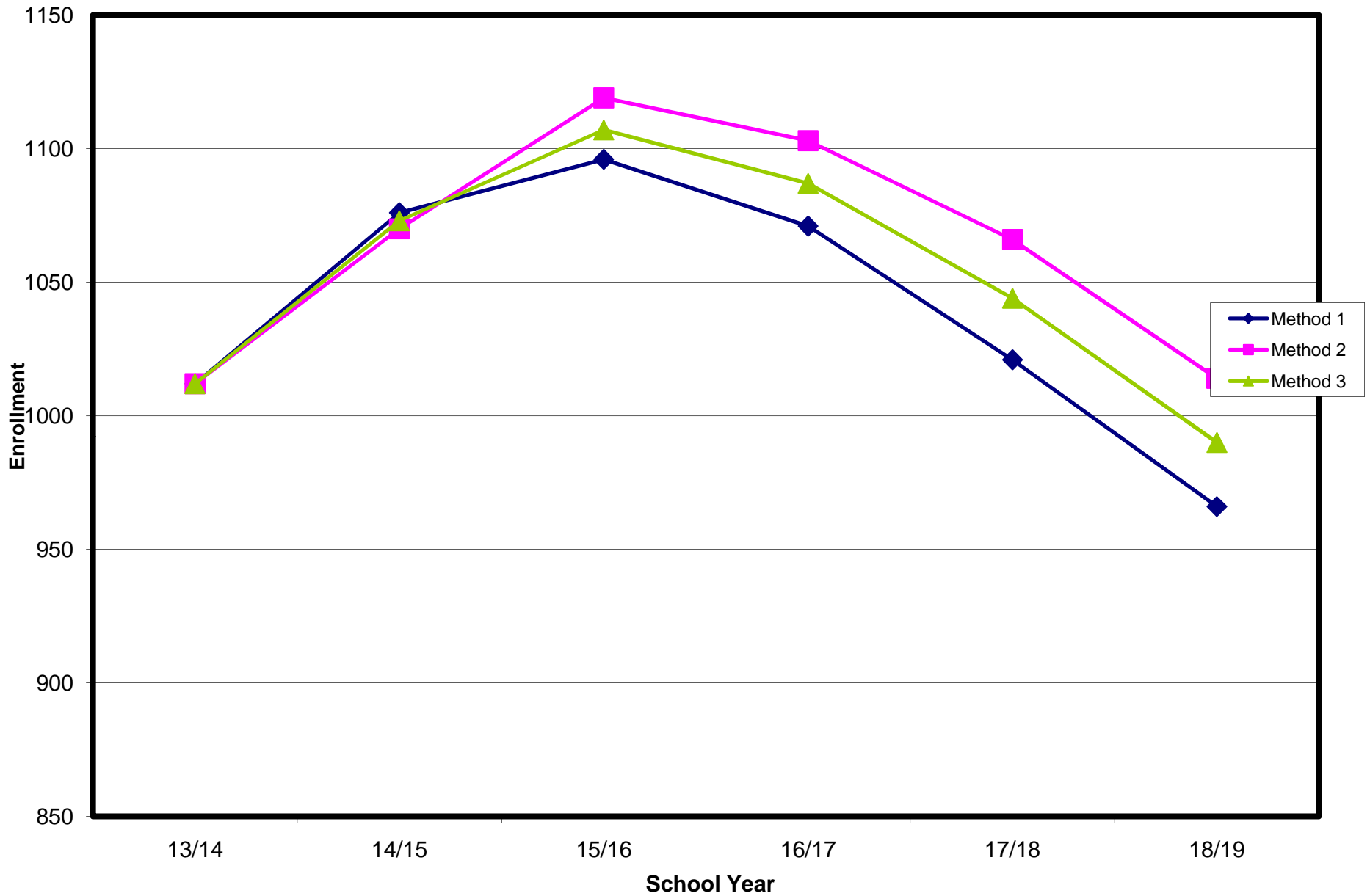
Anytown Public Schools - 13/14

K-5 Projected Enrollment



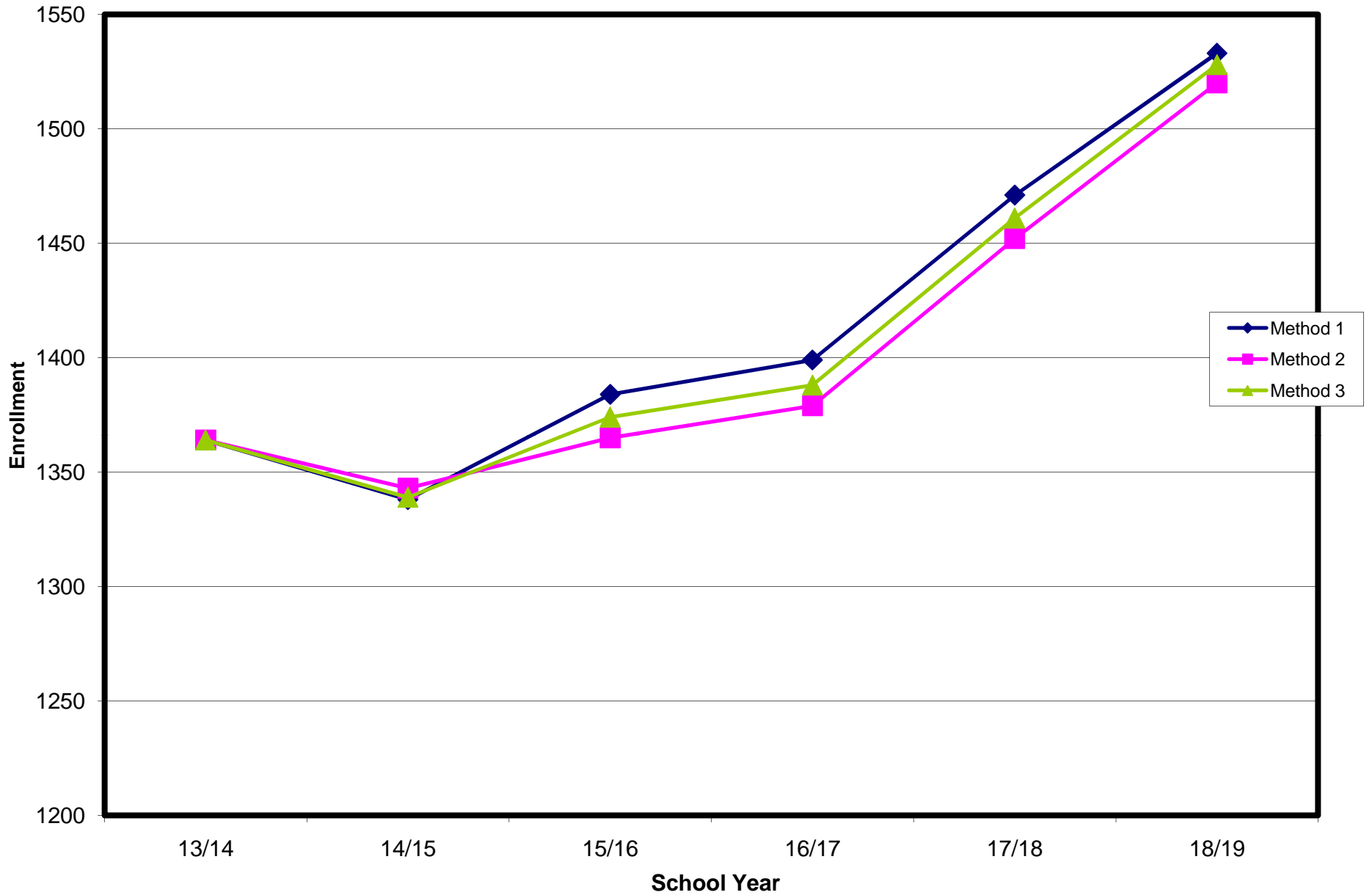
Anytown Public Schools - 13/14

6-8 Projected Enrollment



Anytown Public Schools - 13/14

9-12 Projected Enrollment



Anytown Public Schools - 13/14

K-12 Projected Enrollment

